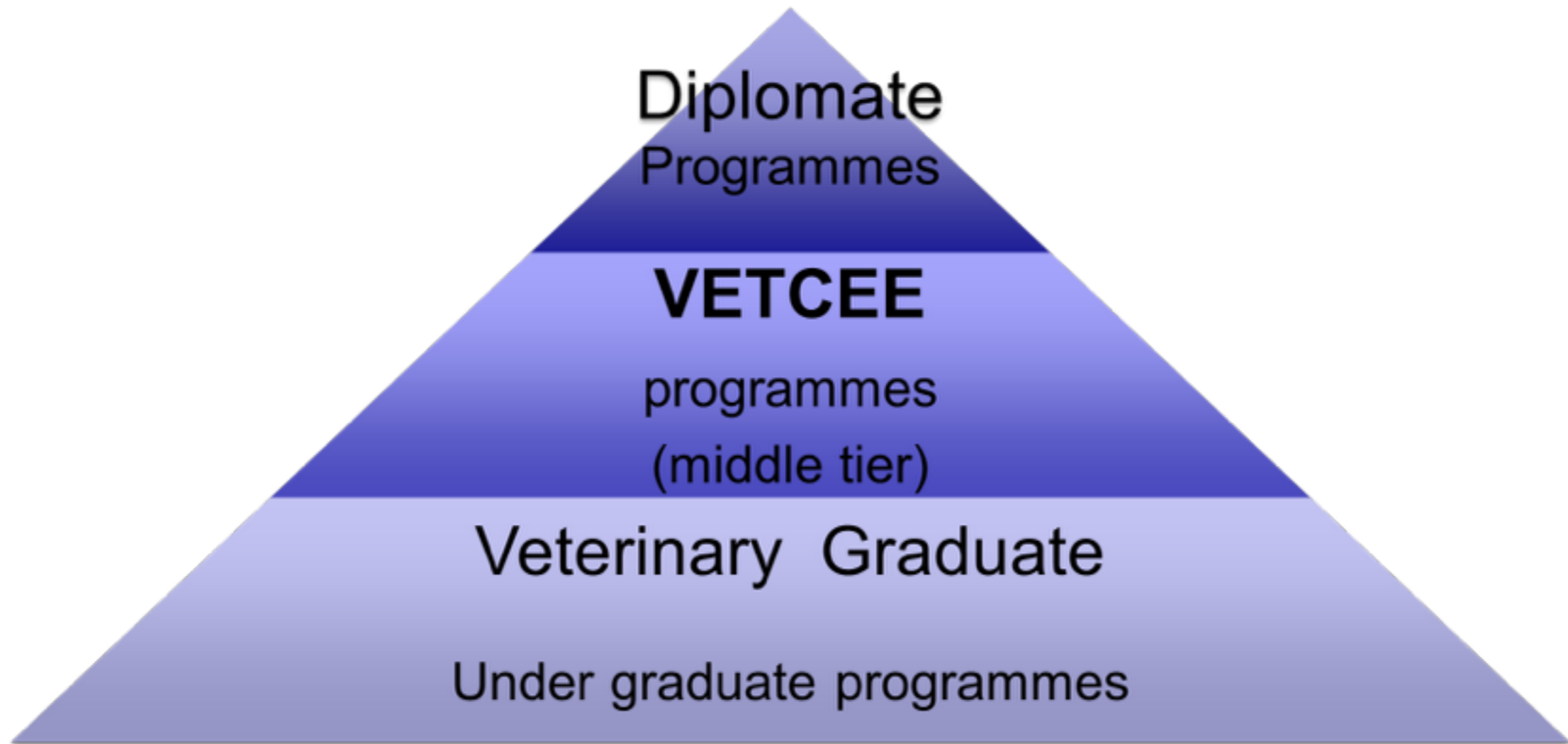




VETERINARY CONTINUOUS EDUCATION IN EUROPE

Overview of activities

May 2015



OBJECTIVES

Develop standards for
“**middle tier**” education programmes

Process



- Sets broad **Standards** for all programme categories, e.g. *Scope, Level, Structure, Quality assurance*



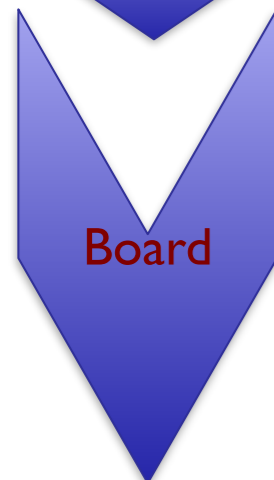
- Subject Sub Committees develop **Competences** for each programme category, e.g. *specific learning outcomes ie skills cognitive & practical*



- Approves Dossiers of **Competencies**
- Appoints a **Evaluation panel** (panel of independent experts)



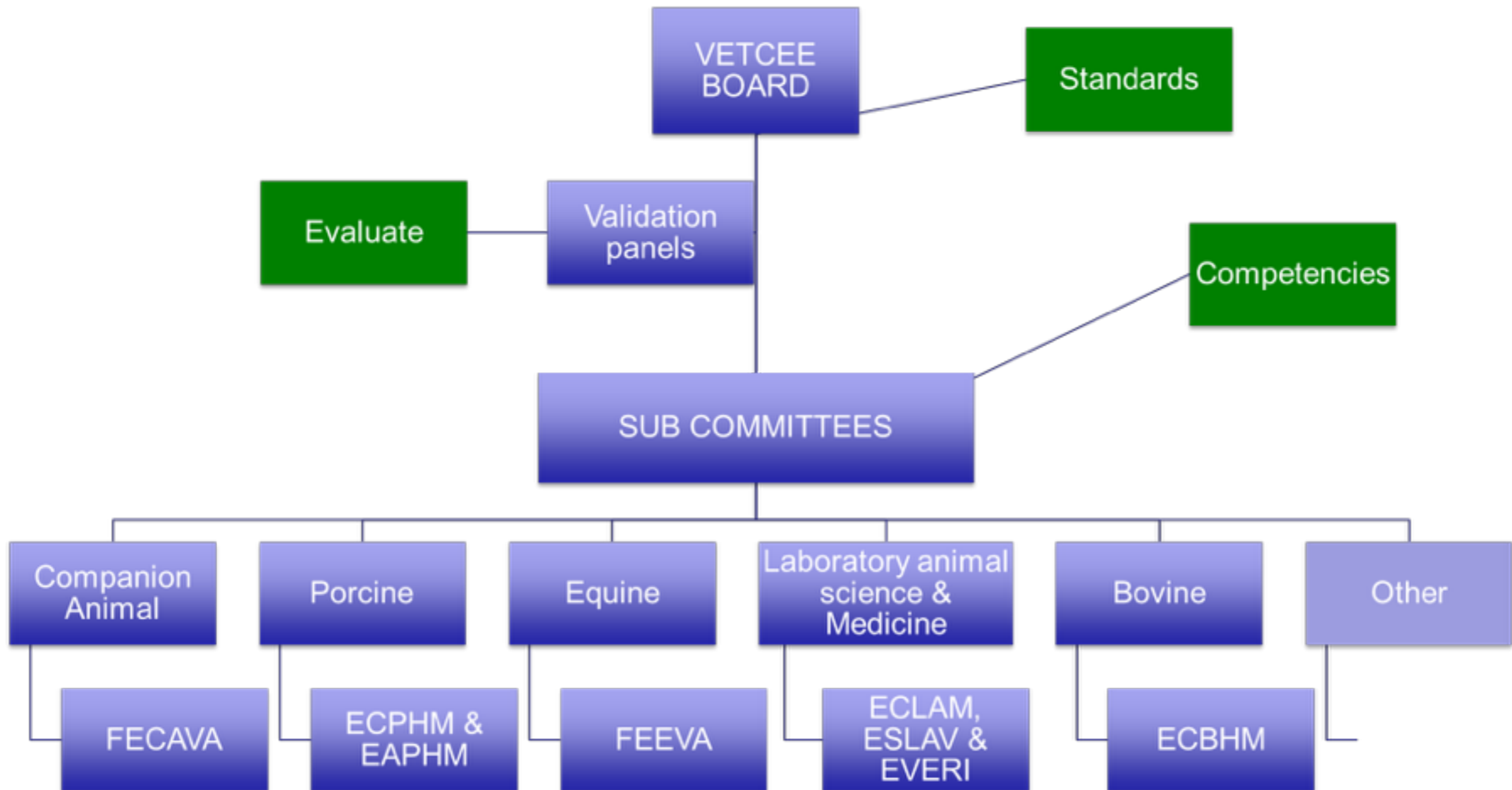
- Evaluation panel **evaluates** each applicant programme
- Makes **recommendations** to applicant & Board



- **Final Approval**



Structure



Level & Scope

Equivalent to **30 ECTS** Units at **EQF level 7**

VETCEE does **NOT** award qualifications or titles to veterinarians

VETCEE does **NOT** involve itself in general C.E points or CPD courses used for purposes of re Registration

-those are matters for National bodies



Level & Scope, programme features ... (1/2)

Achievable_

possible to do while in **full time employment**

Quantity

Equivalent to **30 ECTS** Units

Approximately 6 hours learning per week over 3 years

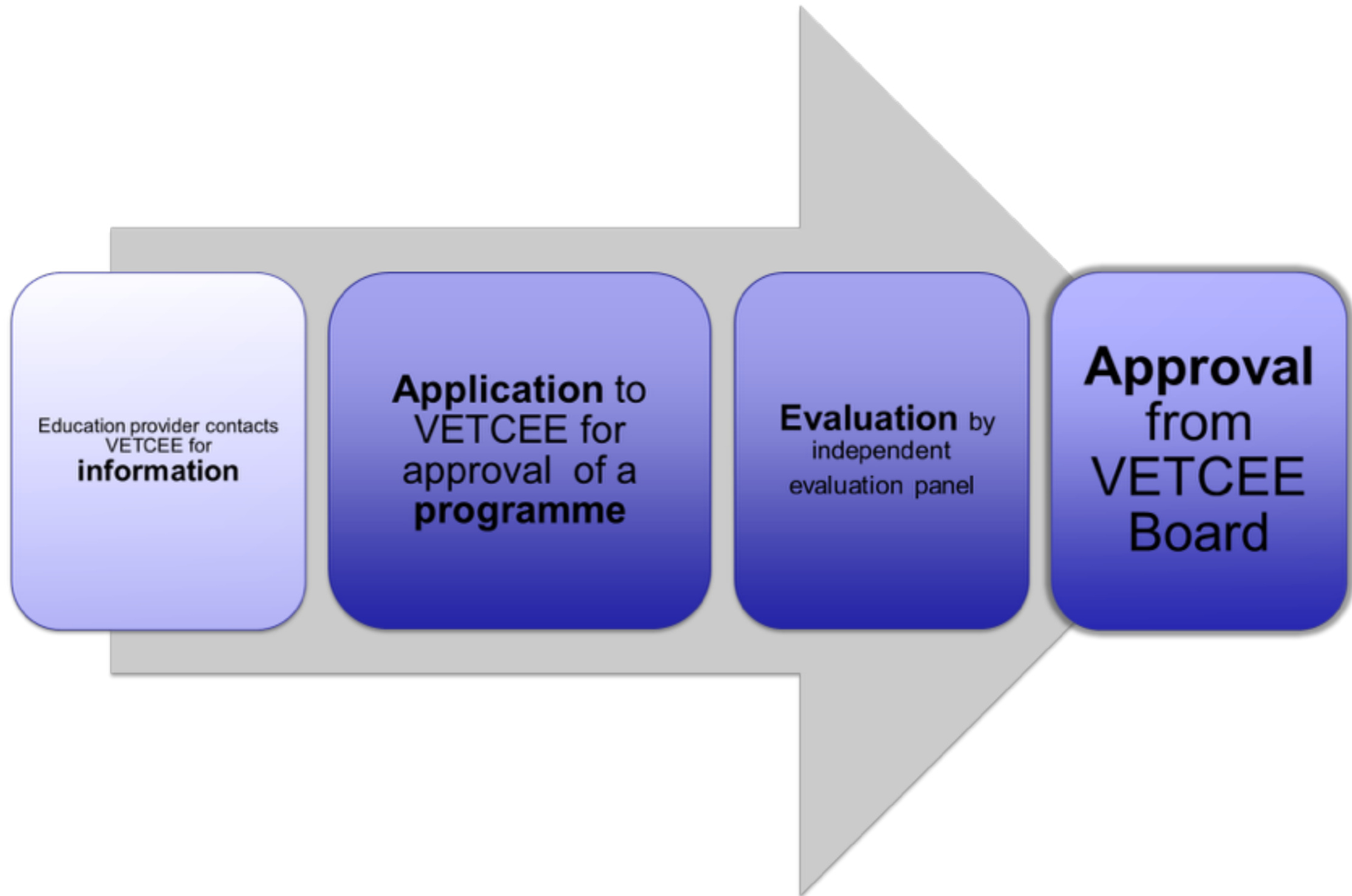
Level

EQF level 7

Learning & teaching styles

Blended learning i.e. taught , self directed, theory, practical , in person , distance learning , web portals, etc.

How Does an existing or new Programme become approved ?



Format of evaluation panels

Panel of five experts is appointed by VETCEE to evaluate written submissions.

Three of them hold the interview with the applicant programme director(s)

- **Chair**
- **Subject specialist 1** academic
- **Subject specialist 2** Practitioner

It is important that validation is **standardised** and therefore carried out by a “central” body to ensure **consistent interpretation** of standards and **transparent independence** .

What does VETCEE approved programmes mean to different stakeholders ?

Reciprocal recognition of Structured post graduate education programmes for veterinarians

Veterinarians ...

You will be able look for an approved programme in your own country or another and know its' standard.

Employer or statutory body...

Understand the level of a programme completed by a veterinarian
Education provider, i.e. *National Vet. Associations, Universities or private providers*

Template to develop new programmes or seek approval of existing ones.



Overview of the Dossiers of Competences

Subject	Supervising organization	Approved
Companion Animal	FECAVA	Approved
Porcine	ECPHM & EAPHM	Approved
Equine	FEEVA	Expected soon
Laboratory Animals Science & Medicine	ECLAM, ESLAM, EVERI	Work in progress
Bovine	ECBHM	Expected soon

Overview of the Approved programmes and new applications



Programme evaluations

Companion animal programmes

3 companion animal programmes evaluated & approved

1. BSAVA British Small Animal Veterinary Association /Nottingham Trent University. **U.K.**

2. Faculty of Veterinary Medicine, University of Life Sciences Lublin, **Poland**

3. Dept. of Veterinary Clinical and Animal Sciences (VCAS), University of Copenhagen & The Danish Veterinary Assoc. (DVA), **Denmark**

1 more programme under evaluation

→ Faculty of Veterinary Medicine, Ghent University, Belgium

➤ VETCEE will be ready soon to accept applications from programmes in Equine Medicine

Equine subcommittee

- Giorgio Ricardi, Italy
- Claire Scicluna, France
- Miia Rihimaki, Sweden
- Miguel Valdes, Spain
- Stephan Wachtarz, Germany
- Josh Slater, United Kingdom

- Goal: Set competences for middle tier equine programs
- Realistic requirements
- Existing middle tiers programs

Introduction and goal of document

The aim of this document is to provide **minimum standards that should be met by national postgraduate programs**, which are intended to certify high level of knowledge, skills and competences in equine veterinary practice.

The **level of competences is set at EQF Level 7**, higher than graduation level, but lower than European Diplomate Specialist Boards, as from the standards and dossier of competences created by the VetCEE Board.

It is anticipated that programs meeting the standards and having been accredited by VetCEE will step into mutual recognition. It is also expected that **ECTS-credits** (European Credit Transfer and Accumulation System Credits) be mutually acknowledged among programs (i.e. accredited courses in any given subject with a certain ECTS delivered by an Institution of a member State will be accepted as sufficient training in the same subject with equivalent ECTS by any national body awarding a postgraduate certificate in equine practice in all member States).

This document applies for programs applying for **VetCEE accreditation as equine general (general practice) program**. A series of competences, classified as core competences, must be met by all applying programs. These are outlined in detail in the present document. If special interest will arise in one of the fields or core competences described in the present guidelines, more specific guidelines for competences maybe created.

Before starting postgraduate training programs, veterinary surgeons should work in general equine practice for at least one year after graduation. Programs should be based on modules which can be combined individually and can be taken on student convenience within three to five years.

Global learning time recommended for all programs is 30 ECTS. Program providers are encouraged to use a variety of teaching methods in order to address the different learning styles; these include direct teaching, practical teaching, self-directed learning, case logs and assignments.

The standards of the equine programme

Module	Percent of time	ECTS credits	Hours
Professional key skills	3.33%	1.0	25.0
Practice management and communication	5%	1.5	37,5
Anesthesia and Analgesia	8.33%	2.5	62.5
Emergency and supportive care	8.33%	2.5	62.5
Diagnostic Imaging	8.33%	2,5	62.5
Internal Medicine	16,66%	5.0	125.0
General Surgery	16,66%	5.0	125.0
Lameness and Sports Medicine	16,66%	5.0	125.0
Reproduction and Neonatology	16,66%	5.0	125.0
TOTAL	100.0%	30.0	750.0



- submitted to VetCEE central committee May 2015



VETERINARY CONTINUOUS EDUCATION IN EUROPE

Thank you
Questions ?

VETCEE Office:

Avenue de Tervueren 12 B-1040 Brussels Tel: +32 (0) 2 533 70 20

Despoina Iatridou despoina@fve.org